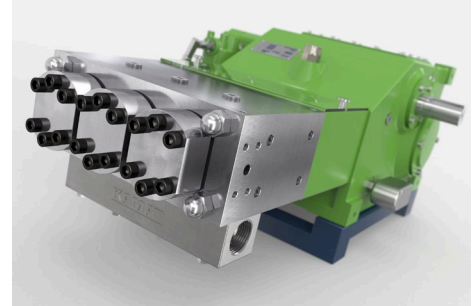


Triplex Plunger Pump K 10000 – 3G

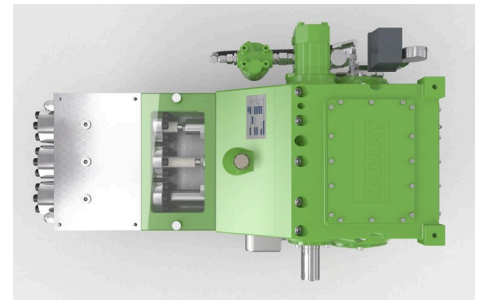
P 15-1

31.07.2019

KAMAT's K 10000 high-pressure pump offers a wide spectrum for industrial process applications. Specialized units customized for sea water, glycol, methanol, oil and other services on request. The classic KAMAT modular component system allows modification of the pump's duty by simply by changing a few component parts. The simplified design makes possible on site retrofitting with very little outlay. Like all KAMAT models, the pumps perform reliably, operate with low crankshaft speeds that reduce wear and cavitation.



- Flow rate is based on 100% volumetric efficiency and 20°C ambient temperature
- Min. inlet pressure depending on fluid medium
- Speed range 10-100% depending on rod force
- Gear dynamically balanced
- Gear with force-fed lubrication (> 110 kW with oil cooler)
- Standard gear ratios
 $i = 3,00 - 3,14 - 3,39 - 3,76 - 4,13 - 4,50 - 4,93$
- API 674 compliant designs



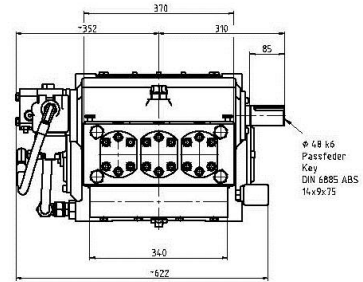
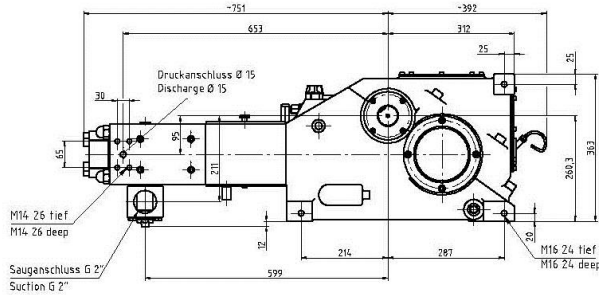
n _{nom} = 500 1/min		p max. bar @ kW				Head type		
Type	l/min	90 kW	110 kW	132 kW	160 kW	A	M	MC
K 10012 – 3G	16	3000	3500	-----	-----	1		
K 10014 – 3G	22	2175	2660	3200	3500	1		
K 10016 – 3G	29	1670	2035	2440	2950	1		
K 10018 – 3G	36	1315	1610	1930	2340	1		
K 10020 – 3G	45	1070	1300	1565	1900	1		
K 10022 – 3G	54	880	1080	1300	1570	1		
K 10024 – 3G	64	740	905	1090	1315	1		
K 10026 – 3G	76	630	770	925	1120	1		H
K 10028 – 3G	88	545	665	800	970	1		H
K 10030 – 3G	101	475	580	700	840	1		H
K 10032 – 3G	115	415	510	610	740	1		H
K 10036 – 3G	145	330	400	485	585	1	1	H
K 10040 – 3G	179	270	330	390	475		1	1
K 10045 – 3G	227	210	260	310	375		1	1
K 10050 – 3G	280	170	210	250	305		1	1
K 10055 – 3G	338	140	170	210	250		1	1
K 10060 – 3G	403	120	145	175	210		1	1
K 10065 – 3G	473	100	125	150	180			1

API 674 = max. 360 1/min

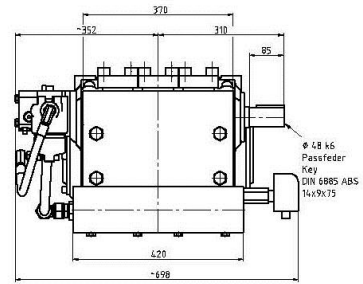
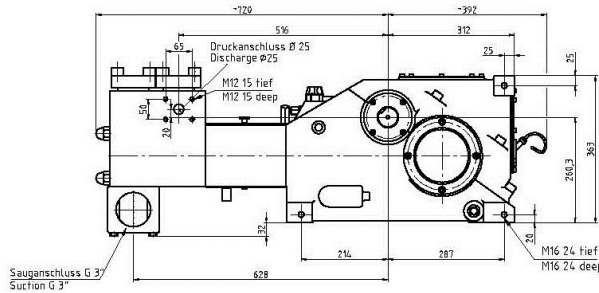
= Ultra High Pressure UHP

Dimensional Drawing K 10000 - 3G ~ 440 kg P 15-2
01.05.2017

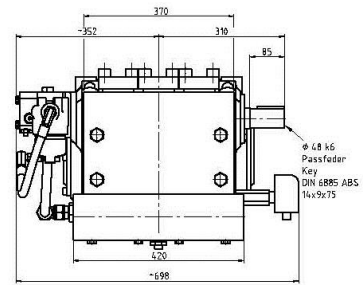
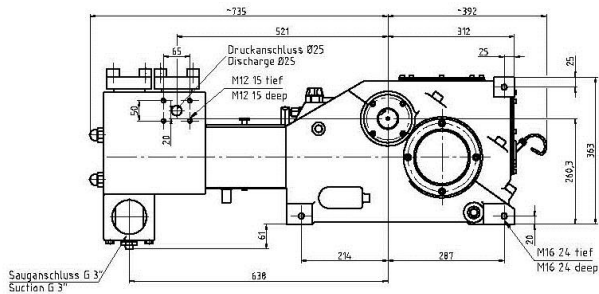
Typ A
Type A



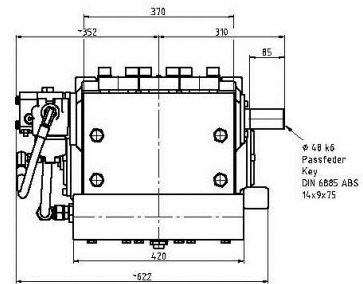
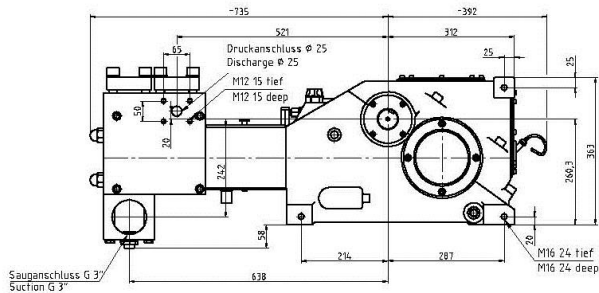
Typ M
Type M



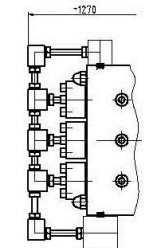
Typ MC
Type MC



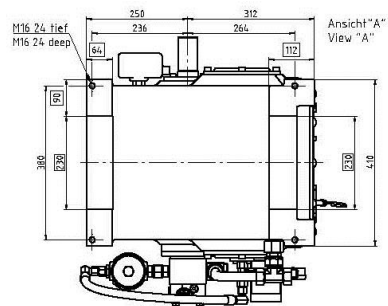
Typ MCH
Type MCH



Typ A
Type A
≈ 1500 bar



↑ A
Fußmaßzeichnung
Footprint



Höchstdruckkopf ≈ 1500 bar
High Pressure Head ≈ 1500 bar