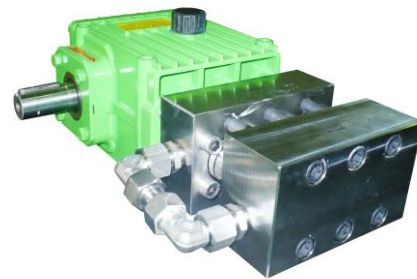


Triplex Plunger Pump K 100 A

P 58-1

28.11.2018

- Flow rate based upon 100% volumetric efficiency and 20°C ambient temperature
- Gear with splash lubrication
- Load-cycle-free pump head in stainless steel
- Tungsten carbide plungers
- Parts in contact with fluid stainless steel
- Installation horizontal



Performance data

Power input max. 15 kW

Type	Plunger Ø	n [1/min]	Q _{th} [l/min]	P [kw] bei / at 1000 bar	P [kw] bei / at 1500 bar	P [kw] bei / at 2000 bar
K 108	8,5 mm	min. 500	2	3,85	5,77	7,69
		600	2,4	4,62	6,92	9,23
		700	2,8	5,38	8,08	10,77
		800	3,2	6,15	9,23	12,31
		900	3,6	6,92	10,38	13,85
		max.1000	4	7,69	11,54	15,00

Type	Plunger Ø	n [1/min]	Q _{th} [l/min]	P [kw] bei / at 1000 bar	P [kw] bei / at 1200 bar
K 111	11 mm	min. 500	3,4	6,54	7,85
		600	4,1	7,88	9,46
		700	4,7	9,04	10,85
		800	5,4	10,38	12,46
		900	6,1	11,73	14,08
		max.1000	6,8	13,08	15,00

Pumping fluid: Water - chemical fluids - max 1000mPas - max 40°C

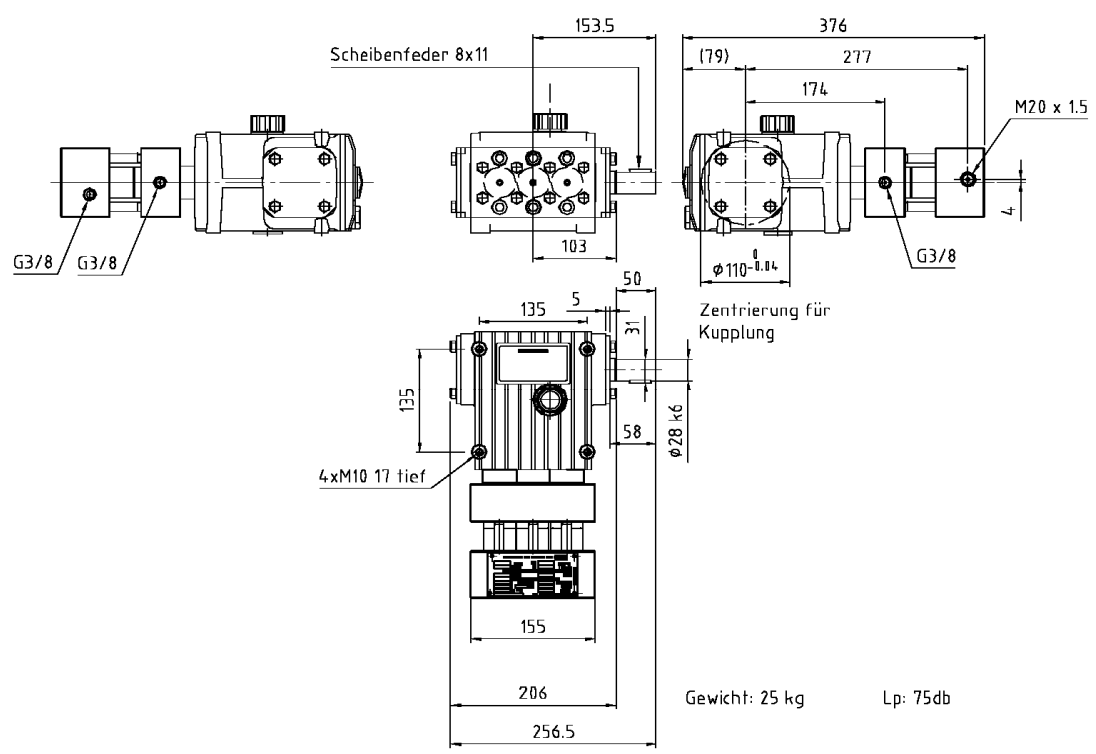
Inlet pressure: 4 - 8 bar, pending on fluid

Accessories:




HP - Discharge manifold K 108 A - Part No. 7013143
 HP - Discharge manifold K 111 A - Part No. 7022162

with pressure gauge and burst disc holder (but **without** burst disc; to be ordered separately depending on the operating pressure)

Dimensional Drawing K 100 P 58-2
15.06.2013



Units

with electric motor 1000 rpm - 6 pole		with HATZ diesel engine air cooled		with B & S petrol engine air cooled	
					
Length	~1050 mm	Length	~1150 mm	Length	~1100 mm
Width	~ 800 mm	Width	~ 900 mm	Width	~ 800 mm
Height	~ 900 mm	Height	~ 1100 mm	Height	~ 1000 mm
Weight	~ 250 kg	Weight	~ 280 kg	Weight	~ 220 kg